



DAQTest Test Management Platform Installation Manual

Beijing Promise-auto Technology Co., Ltd.

PROMISE AUTO

Introduction

Thank you very much for using DAQTest of Beijing Promise-auto Technology Co., Ltd.
This manual precisely explains how to install the DAQTest. To ensure proper installation of the software, please read this instruction manual carefully before use.

Caution

The performance and functionality of the software will be continuously improved. The contents of this manual are subject to change without prior notice.

Every effort has been made by the author to ensure accuracy in the preparation of this manual. However, should you have any doubts about the manual, please feel free to contact us instantly.

Copying or reproducing all or any part of the contents of this manual without the permission of Beijing Promise-auto Technology Co., Ltd. is strictly prohibited.

It is not allowed to transfer or rent this software to any third party.

Beijing Promise-auto Technology Co., Ltd. assumes no liability to any party for any loss or damage, direct or indirect, caused by the software.

The software license will not be reissued if it is lost, so please keep it safe.

Version

January 2016	1 st Edition
January 2019	2 nd Edition
June 2020	3 rd Edition
May 2021	4 th Edition
August 2022	5 th Edition

1. Before Installation

The operating environment required for the DAQTest software is as follows. Before installation, confirm that the operating environment is satisfied.

Table 1 Supported Operating System

Operating System	Version	32bit	64bit	SP
Windows 7	Professional	○	○	SP1
Windows 8	Pro	○	○	
Windows 10	-	○	○	
Windows 11	-	○	○	
Windows Server 2008	R2	-	○	SP1
Windows Server 2012	-	-	○	
Windows Server 2016	-	-	○	
Windows Server 2019				

○ support - unsupported

Table 2 Required PC Environment

Subject	Content
CPU	i5 2.4GHz or higher
Memory	More than 8GB
Hard Disk	More than 500MB available space
Mouse	OS supports mouse
Display	1280x1024 pixels or more, 65536 colors or more
Communication Port	An Ethernet card is required for the PC. Windows TCP/IP service must be installed.

Table 3 Other Environments

Software	Version
Microsoft Office Word	2010 or newer(2013 or 2016 recommended). When using the APP client, you need to install it on the client. When using the web client, it needs to be installed on the server side.

2. Installation package files

Table 4 The list of installation package files

File or Folder	Description
DAQTest	DAQTest Server Installation Package(With Client)
DAQTestClient	DAQTest Client Installation Package
WebServer	DAQTest Web Service Installation Package
IntallManual_EN.pdf	DAQTest Installation Manual (English Version)
UserManual_EN.pdf	DAQTest User Manual (English Version)
IntallManual_CN.pdf	DAQTest Installation Manual (Chinese Version)
UserManual_CN.pdf	DAQTest User Manual (Chinese Version)

3. Install Software

Install Server

Go to the DAQTest folder in the installation folder and run the DAQTestSetup.exe program. Install the DAQTest Server(with client) as prompted.

Install Client

If you want to install the client software on another computer on your network, follow the steps below to install it.

Go to the DAQTestClient folder below the installation folder and run the DAQTestClientSetup.exe program. Follow the prompts to install the DAQTest client.

4. Update Software

Update Server

Follow the steps below to perform the update.

Step1. If you want to restore setting, please backup the configdata.db, DAQTestServer.exe.config and DAQTestFileServer.exe.config in the DAQTest installation folder.

Step2. Head to "Start Menu → Settings → Apps " to uninstall the DAQTest.

Step3. Run the new installer to install the software.

After the software is updated, please follow the steps below to restore the setting information.

Step1. Copy the backed up configdata.db, DAQTestServer.exe.config and DAQTestFileServer.exe.config and overwrite them in the new installation folder.

Step2. Reboot your computer.

Update Client

Follow the steps below to perform the update.

Step1. Head to "Start Menu → Settings → Apps " to uninstall the DAQTestClient software.

Step2. Run the new installer to install the software.

5. System Recovery

Follow the steps below to perform a system recovery.

Step1. Install the DAQTest software into the new system according to Chapter 3.

Step2. From the DAQTest data backup folder, copy the DAQTestServer.exe.config and DAQTestFileServer.exe.config and overwrite them in the new installation folder.

Step3. Locate the latest database file from database folder of the DAQTest data backup folder, remove the date from the file name, copy and overwrite it in the new installation folder. (e.g. configdata_20200921085840.db needs to be modified to configdata.db).

Step4. Copy other data folders in the DAQTest data backup folder to the same location as the "Data Folder" of the old system. If you cannot copy to the same location, you can copy to the default folder (the default is: C:\DAQTestData) and reconfigure the

"Data Folder" as described in Chapter 7.

Step5. Reboot your computer.

6. Software trials and licensing

The DAQTest software can be tried for 60 days without authorization. After 60 days, the software trial expiration message will be prompted. After purchasing the DAQTest license, you can activate the software with instructions below.

Step1. Run DAQTest Client and login to server. Select the Authority menu from the File menu.

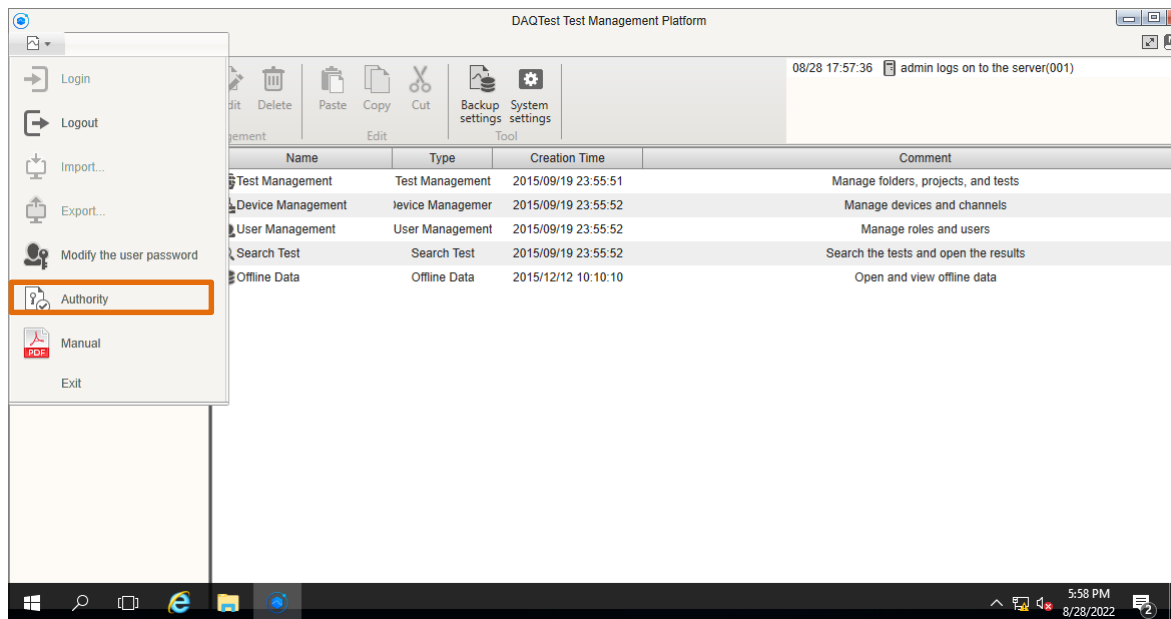


Figure 1 DAQTest main window

Step2. In the Authority dialog box, click "Copy" button to copy Serial No. And send copied Serial No. to Beijing Promise-auto Technology Co., Ltd. to get License No. Paste the obtained License No. into the authority dialog box. Then click the "OK" button.

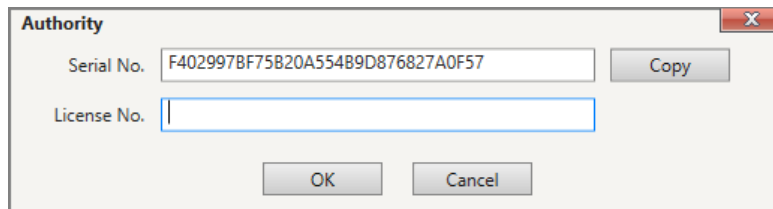


Figure 2 Authority dialog box

Step3. Wait for a while, until the message below pops up to indicate that the software activation succeeds. Successful activation takes effect the next time you start the computer.

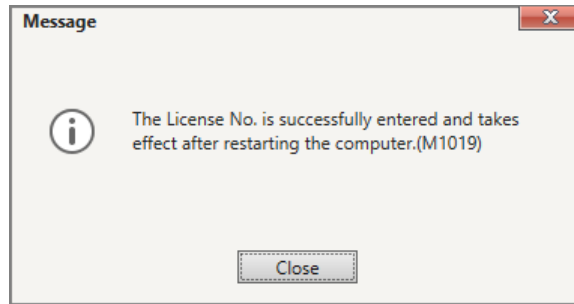


Figure 3 Authorization Success Prompt Message

Authorization information can be viewed in the software's "About" dialog box.

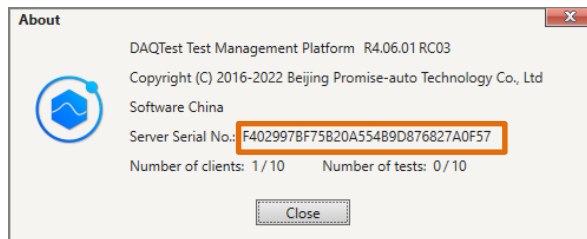


Figure 4 DAQTest version information

7. Configuration before using the software

The default data saving folder for DAQTest is "c:\DAQTestData", if necessary, click the System Settings button on the toolbar to modify it in the "System Settings" dialog box. Modifications take effect after you restart your computer.

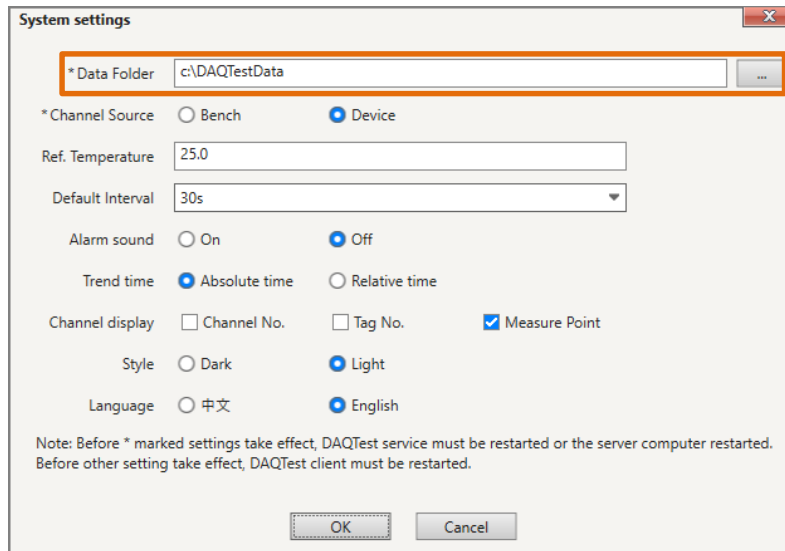


Figure 5 System settings dialog box

The default data backup path is "c:\DAQTestData\backup", if necessary, click the Backup Settings button on the toolbar to modify it in the Backup Settings dialog box.

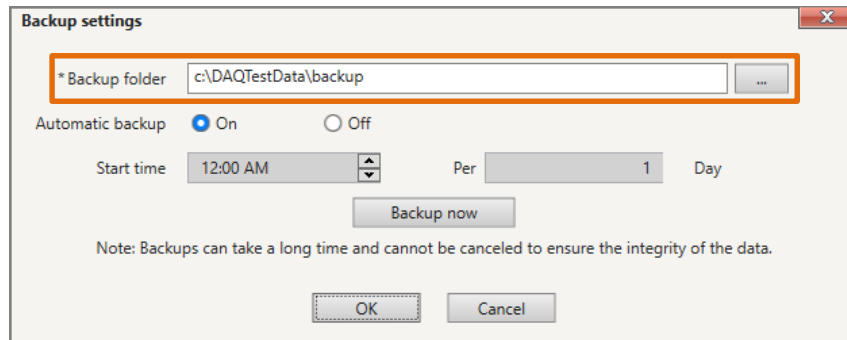


Figure 6 Backup settings dialog box

8. Web service installation (optional)

If you want to enable DAQTest 's web service, follow the steps below.

Web service program installation

Microsoft IIS service is recommended. If the IIS service is not available in the system, you can install it with following instructions:

Go to Windows Control Panel → Programs and Features → Turn Windows Features on or off → tick Internet Information Services → click OK to complete the installation(as shown in the figure below).

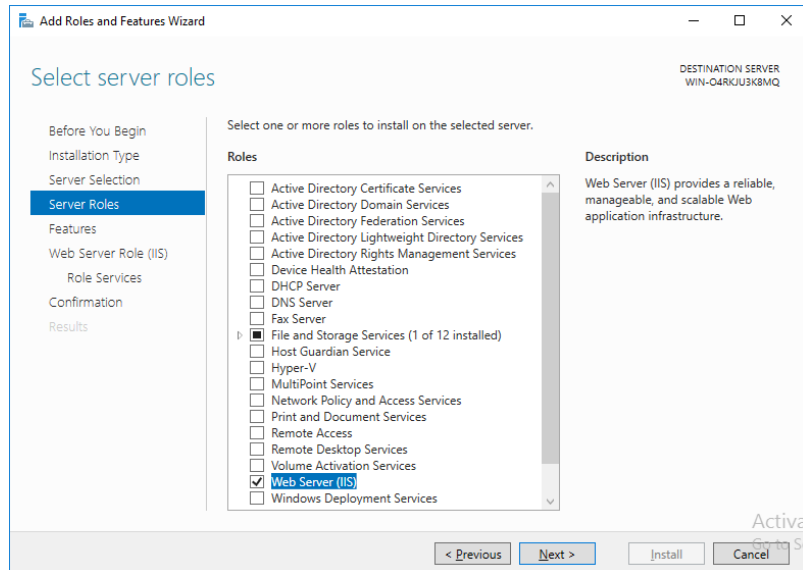


Figure 7 Turn Windows features on or off dialog box

If there is no IIS service function in the system, you can run WebServer \appserv-x64-9.3.0.exe in the installation package to install Lightweight WebServer.

Copy web files

Copy all the files under WebServer \www in the installation package to the webpage folder

of the web service. You are strongly recommended to create a subfolder: DAQTest . E.g:
 Web page folder served by IIS: C:\inetpub\wwwroot\DAQTest
 Web folder for appserv : C:\AppServ\www\DAQTest

Configure DCOM permissions for Office

Run “dcomcnfg” on the command line to open the DCOM configurator. Then locate the Component Services → Computers → My Computer → DCOM Config → Microsoft Word (for example: Microsoft Word 97-2003 document). This is shown in the following figure.

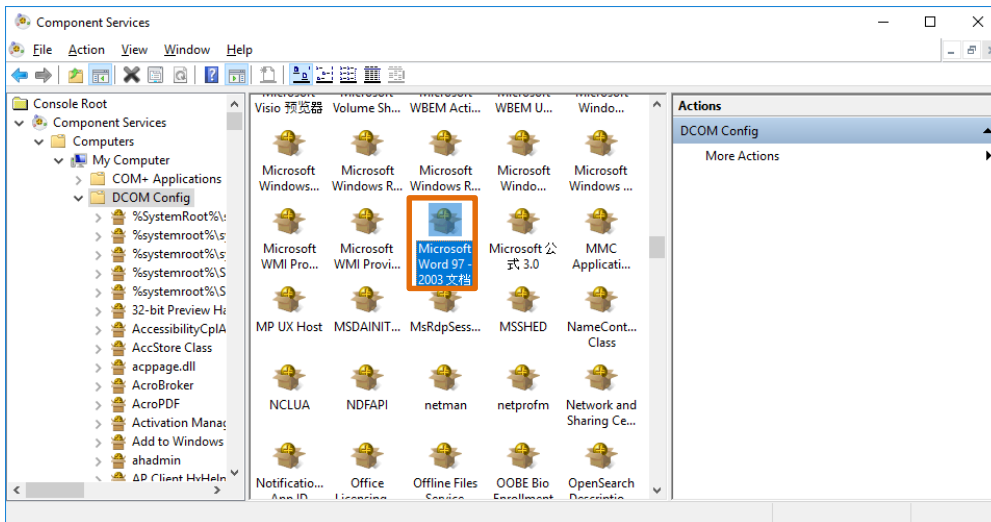


Figure 8 DCOM configurator

Right-click the icon and select Properties. In the following figure of the properties dialog box, select “Security” page, and select "Customize" in the "Launch and Activation Permissions" and click the Edit button to add The Everyone user to the Group or user names.

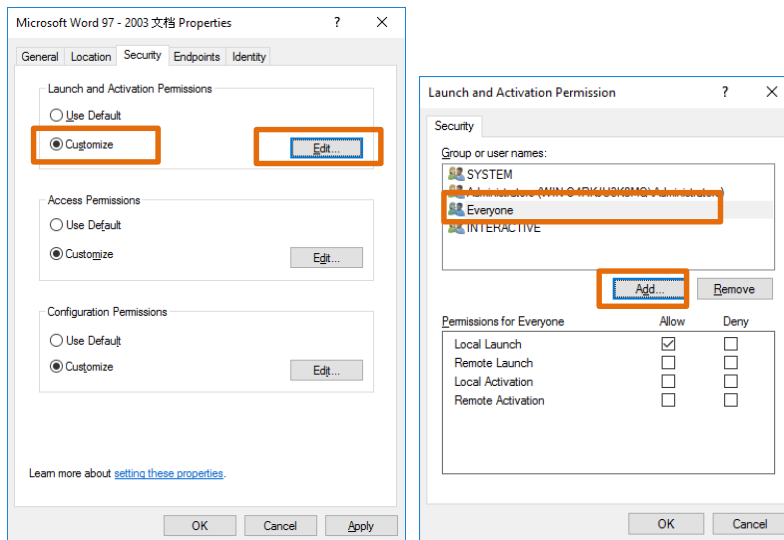


Figure 9 Office’s DCOM Security

Then switch to the Identity page and select “The interactive User”. Then click on the "OK" button.

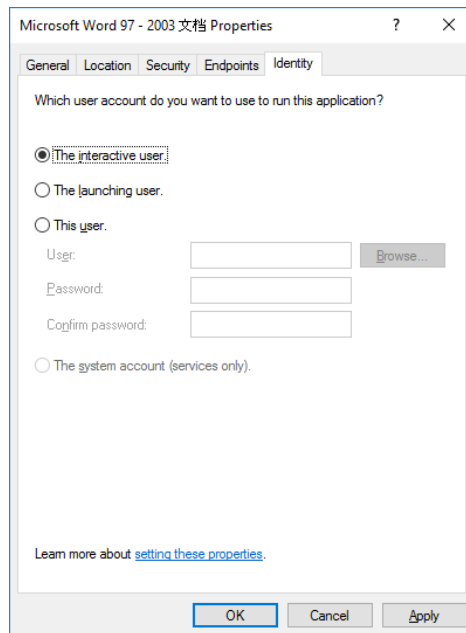


Figure 10 Office’s DCOM Identity

Configure Windows automatic login

Firstly, create an auto-login user, such as DAQTestReport.

Then, run “control userpasswords2” on the command line, click the OK button after configuring like the image below, and enter the password of the DAQTestReport user.

Note: If there is no check box(Users must enter a user name and password to use this computer) in the following dialog box, run “regedit” on the command line, modify the value of the node below in the registry to 0, and then run the “control userpasswords2” command again.

HKEY_LOCAL_MACHINE\SOFTWARE\Microsoft\WindowsNT\CurrentVersion\PasswordLess\Device

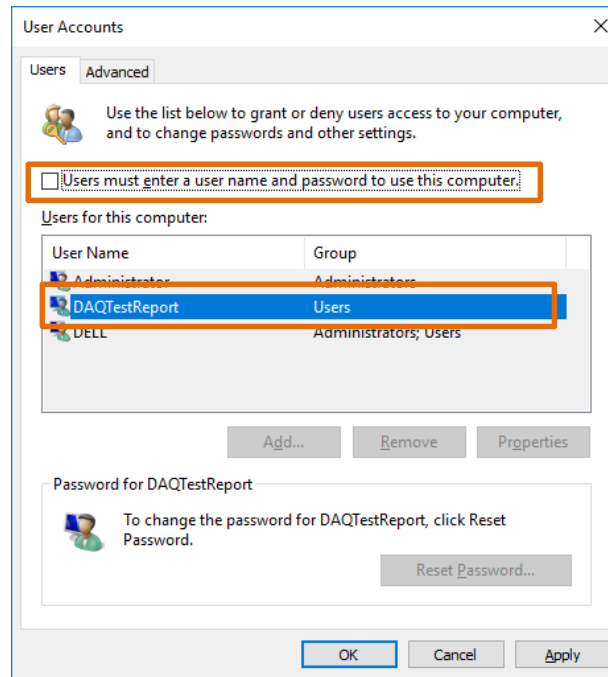


Figure 11 Windows auto-login config

9. Precautions

1. Change the Windows' "Power Options" to High performance to prevent the computer from sleeping during a test run.
2. if connected to the Internet, Windows 10 and Windows 11 OS will automatically patch and restart, please manually schedule the automatic update time of the system.